



A.C.S. Mtb Academy
CUI 34299340
Sediul operational: Sos Iancului, Nr 27 A, Bl. 105 D, Sc A, Et 7, Ap 38, Sector 2, Bucuresti
Tel: +40 755122111
E-mail: razvan.juganaru@mtbacademy.com
razvan.juganaru@yahoo.com

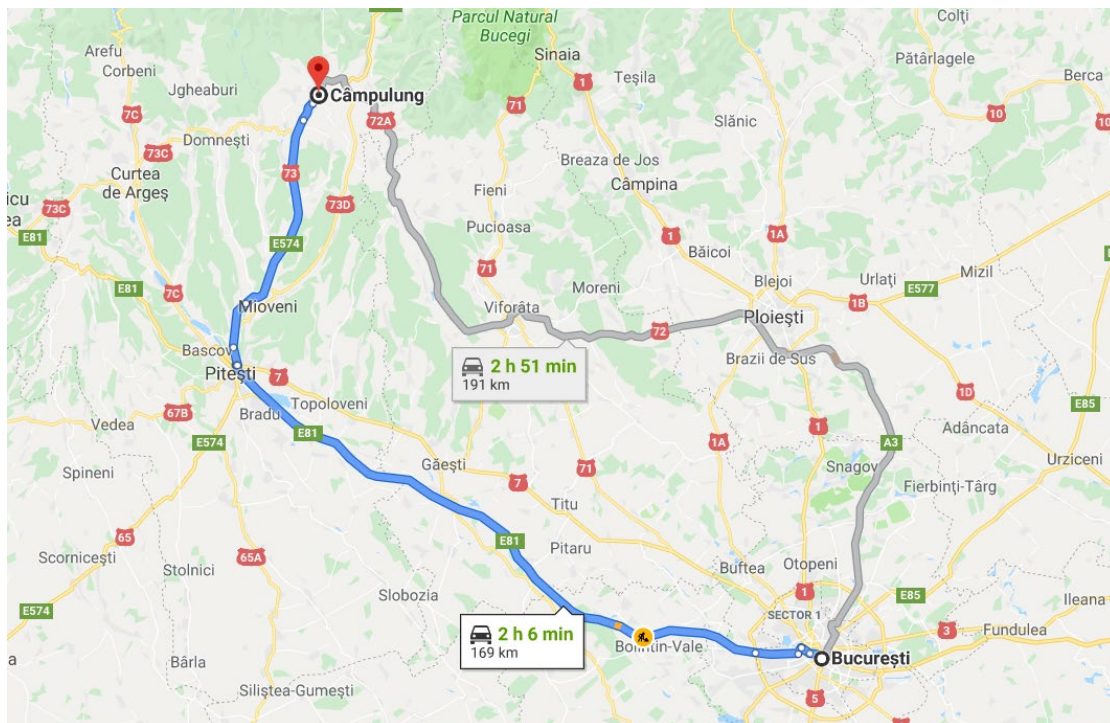
Technical Guide Mtb ACADEMY CUP (XCO)

Race details

Name: Mtb ACADEMY CUP (UCI C2 Race, National Cup stage for Elite, U23, Junior, Cadets, Children, Master and Amateurs, and Balkan Championships for Adults and National Championships for Children)

Organizer: A.C.S. MTB Academy in partnership with Romanian Cycling Federation

Location: Câmpulung Muscel, Arges County, 170 km from Bucharest



Format: Olympic Cross-Country (XCO) on a 4.4 km course with a level difference of 170 m (according to Garmin Connect)

Date: *September 23, 2023*

Start time: 08:30

Official web page: <https://www.ridersclub.ro/en/cycling-race/mtb-academy-cup-xco-2023>

Registration: <https://www.ridersclub.ro/en/cycling-race/mtb-academy-cup-xco-2023#entries>



A.C.S. Mtb Academy
CUI 34299340
Sediul operational: Sos. Iancului, Nr 27 A, Bl. 105 D, Sc A, Et 7, Ap 38, Sector 2,
Bucuresti
Tel: +40 755122111
E-mail: razvan.juganaru@mtbacademy.com
razvan.juganaru@yahoo.com

Regulations

The competition complies with UCI and FRC regulations. The full regulation can be found at
http://www.uci.ch/mm/Document/News/Rulesandregulation/17/29/73/4MTB-E-1.01.2017_English.pdf
<https://www.uci.org/docs/default-source/rules-and-regulations/part-i-general-organisation/1-gen-20200612-e.pdf>
<https://www.uci.org/docs/default-source/rules-and-regulations/03022020-mtb-eng-left-column.pdf>

Event registration

To participate it is necessary to register through the official page, accessible through the link here:
<https://www.ridersclub.ro/en/cycling-race/mtb-academy-cup-xco-2023#entries>. Registration must be validated by paying the participation cost, amounting to RON 125 for children and RON 150 for adults, until September 22, 2023 - 4:00 p.m.

Elite category athletes must hold a valid UCI license.

Amateur athletes must hold an amateur license issued by the Romanian Cycling Federation for 2023.

Route:

Elite, U23, Juniors, Cadets, Amateurs, Master: 4.4 km / lap with a level difference of 170 m

Children 9-14 years: about 3 km / lap with a level difference of 70 m

Children 5-8 years: about 2 km / lap with a level difference of 20 m

The Elite/Junior/Cadets/Master/Amateur route is available here:

https://www.bikemap.net/en/r/5005028/#/z17/45.2696654,25.0179076/google_hybrid

and illustrated below. Additional information about the route is available on the official website, here:

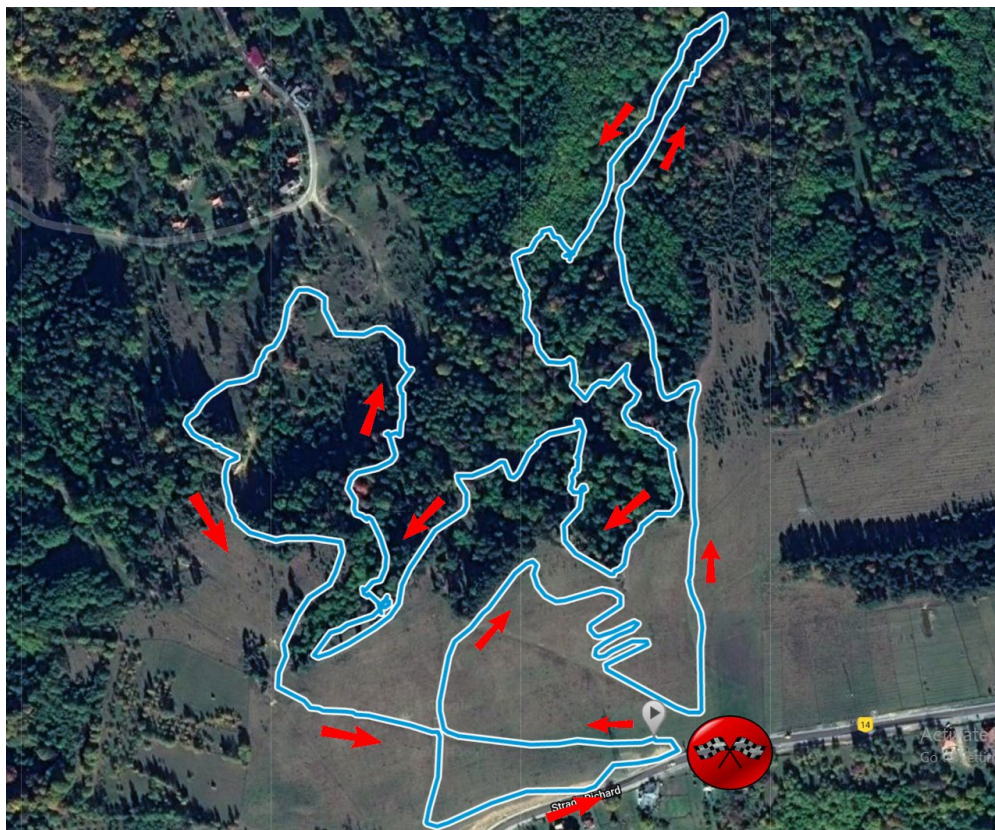
<https://www.ridersclub.ro/en/cycling-race/mtb-academy-cup-xco-2023#route>

Children's tracks are available here:

<https://www.ridersclub.ro/en/cycling-race/mtb-academy-cup-xco-2023#route>



A.C.S. Mtb Academy
 CUI 34299340
 Sediul operational: Sos Iancului, Nr 27 A, Bl. 105 D, Sc A, Et 7, Ap 38, Sector 2,
 Bucuresti
 Tel: +40 755122111
 E-mail: razvan.juganaru@mtbacademy.com
razvan.juganaru@yahoo.com



● Alitudine



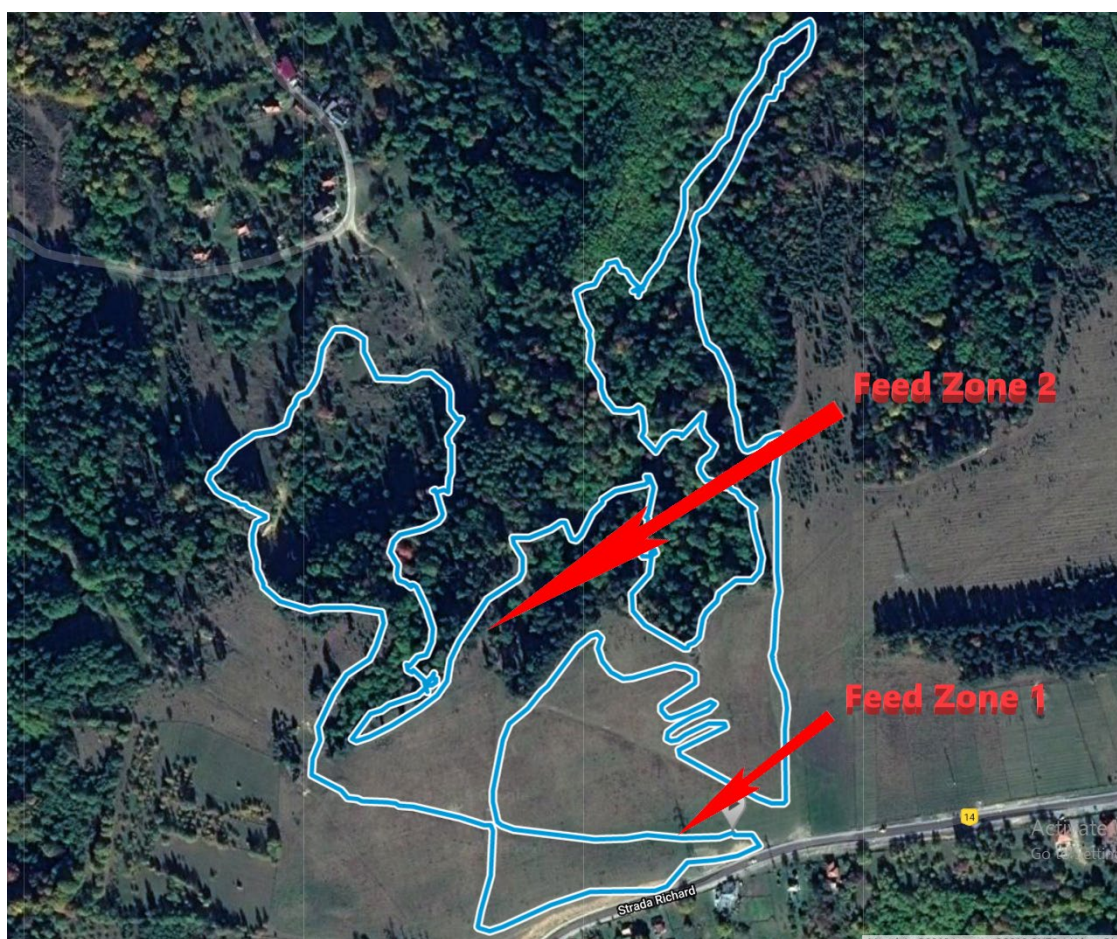


A.C.S. Mtb Academy
CUI 34299340
Sediul operational: Sos Iancului, Nr 27 A, Bl. 105 D, Sc A, Et 7, Ap 38, Sector 2,
Bucuresti
Tel: +40 755122111
E-mail: razvan.juganaru@mtbacademy.com
razvan.juganaru@yahoo.com

Feedings zones / technical support

The event will have integrated two areas of feedings / technical assistance:

- (1) At the start zone: 45.267162, 25.019316
- (2) Halfway: 45.268506, 25.017558





A.C.S. Mtb Academy
CUI 34299340
Sediul operational: Sos Iancului, Nr 27 A, Bl. 105 D, Sc A, Et 7, Ap 38, Sector 2,
Bucuresti
Tel: +40 755122111
E-mail: razvan.juganaru@mtbacademy.com
razvan.juganaru@yahoo.com

Timing

The event will be timed electronically, with disposable chips.

Picking up contest numbers

The verification of licenses, which is mandatory, and the collection of competition numbers is scheduled for Friday, September 22, between 17:00 and 19:00, at the competition's office located at the start area on 67 Richard Street (45.267276, 25.019981). Any athlete who fails to pick up the competition number within the specified intervals has the obligation to notify the organizer, who will notify the referee committee. Otherwise, they will not be allowed to be staged at the start.

Equipment

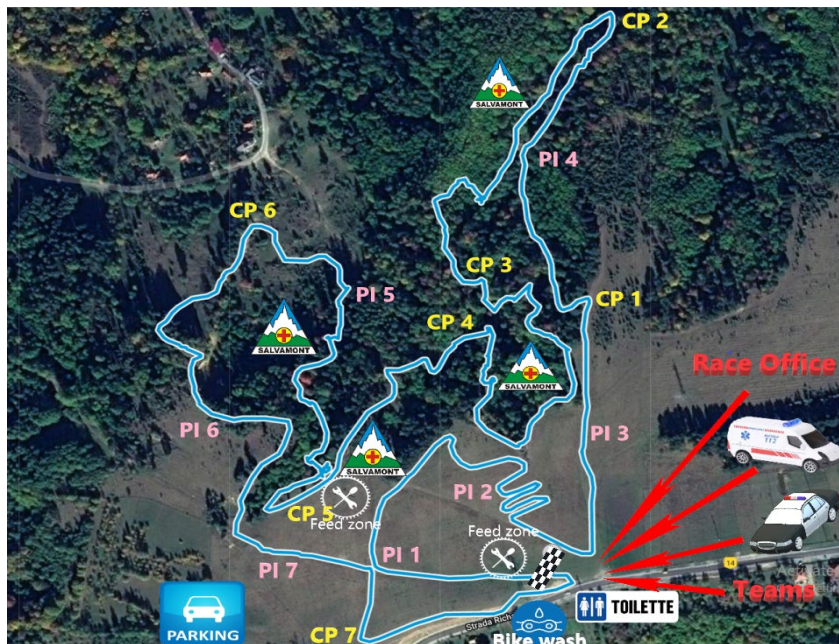
The bike must be an MTB bike and be in good working order. Helmet is mandatory. The race number is mandatory, one on the handlebars of the bike and one on the competitor's back. For visibility, it must be fixed in front, on the handlebars of the bike as well as on the back, at hip level.

Minimum number of participants

If there will not be at least 8 participants in any of the categories of the national race, by decision of the FRC technical delegate alongside the organizer and the President of the Referees Commission, the category will merge with the next higher category. The decision will be communicated at the technical meeting that will take place before the first start of qualifying. The UCI races do not need to comply with the rule above.

Start area

The start area will be arranged near **Richard Street no. 67**, Campulung. GPS coordinates are 45.267132, 25.019386. The positioning of the start area is signaled in the image below.





A.C.S. Mtb Academy
CUI 34299340
Sediul operational: Sos Iancului, Nr 27 A, Bl. 105 D, Sc A, Et 7, Ap 38, Sector 2,
Bucuresti
Tel: +40 755122111
E-mail: razvan.juganaru@mtbacademy.com
razvan.juganaru@yahoo.com

Contest categories

XCO | Elite | Male
XCO | Elite | Female
XCO | U23 | Male
XCO | U23 | Female
XCO | Junior | Male
XCO | Junior | Female
XCO | Cadets | Male
XCO | Cadets | Female
XCO | Children A 13-14 | Male
XCO | Children A 13-14 | Female
XCO | Children B 11-12 | Male
XCO | Children B 11-12 | Female
XCO | Children C 9-10 | Male
XCO | Children C 9-10 | Female
XCO | Children D1 7-8 | Male
XCO | Children D1 7-8 | Female
XCO | Children D2 5-6 | Male
XCO | Children D2 5-6 | Female
XCO | Master 50+ (Licensee) | Male
XCO | Master 40-49 (Licensee) | Male
XCO | Master 30-39 (Licensee) | Male
XCO | Master OPEN 30+ years (Licensees) | Female
XCO | Amateur OPEN 19+ years old (Licensed) | Male
XCO | Amateur OPEN 19+ years old (Licensed) | Female

*if there are not at least 8 participants in one of the categories, the category merges with the next higher category.

Duration:

The number of laps will be decided during the technical meeting.

Men's and U23 Men's Elite: 1h 30' – 2h 00' (5 laps)
Elite Women and U23 Women: 1h 30' – 2h 00' (4 laps)
Juniors: 1h – 1h 15' (4 laps Men; 3 laps Women)
Cadets: 45' – 1h (3 laps Men; 2 laps Women)
Amateur: 1h – 1h 15' (4 laps Men; 3 laps Women)
Master 1 (30-39) Men: 1h – 1h 15' (4 laps)
Master 2 (40-49) Men: 1h – 1h 15' (4 laps)
Master 3 (50+) Men: 1h – 1h 15' (4 laps)
Women's Master (30+): (3 laps)
Children A – children between 13 and 14 years old (inclusive) Male and Female: 40' - 50' (4 laps)
Children B – children between 11 and 12 years old (inclusive) Male and Female: 30' - 45' (3 laps)
Children C – children between 9 and 10 years old (inclusive) Male and Female: 15' - 30' (2 laps)



A.C.S. Mtb Academy
CUI 34299340
Sediul operational: Sos. Iancului, Nr 27 A, Bl. 105 D, Sc A, Et 7, Ap 38, Sector 2,
Bucuresti
Tel: +40 755122111
E-mail: razvan.juganaru@mtbacademy.com
razvan.juganaru@yahoo.com

Children D1 – children aged 7 to 8 years (inclusive) Male and Female: 1' - 15' (2 laps)
Children D2 – children aged 5 to 6 years (inclusive) Male and Female: 1' - 15' (1 lap)

Start procedure

There will be separate starts for each category:

07.00: Opening of the route for free practice session
08.00: Closing of the free practice session
08.20: Lining up for Start for participants of the children categories D2 (5-6 years) and D1 (7-8 years)
08.30: Start for participants of the children categories D2 (5-6 years) and D1 (7-8 years)
08.50: Lining up for at Start for participants of C children's races (9-10 years)
09.00: Start for participants of C children races (9-10 years)
09.30: Lining up for Start for B children races (11-12 years old)
09.45: Start for B children races (11-12 years)
10.15: Lining up for at the start for participants of children A races (13-14 years)
10.30: Start for participants of children A races (13-14 years)
11.30: Lining up for at the start for the participants of the races Cadets M/F, Amateur M/F, Master 1 M, Master 2 M, Master 3 M, Master F
11.45: Start for participants of the races Cadets M/F, Amateur M/F, Master 1 M, Master 2 M, Master 3 M, Master F
13.30: Lining up for start for Elite M/F, U23 M/F and Juniors M/F races
13.45: Start for Elite M/F, U23 M/F and Juniors M/F races

The arrangement on the starting grid will be based on a starting list that will be published on the evening of September 22, after the technical meeting.

This will be based on the most recent UCI XCO ranking, for the UCI races, while the for the rest of the races, the 2023 National Cup General Rankings will inform the order.

The start will be given by a start referee according to the following procedure: announcements with 3 minutes, 2 minutes, 1 minute and 30 seconds before the start, followed by the announcement that the start will be given at any time in the next 15 seconds.

Services / facilities available at the start area

Healthcare
First aid points
Technical support
Feeding and hydration zone
Toilets
Bicycle washing



A.C.S. Mtb Academy
 CUI 34299340
 Sediul operational: Sos. Iancului, Nr 27 A, Bl. 105 D, Sc A, Et 7, Ap 38, Sector 2, Bucuresti
 Tel: +40 755122111
 E-mail: razvan.juganaru@mtbacademy.com
razvan.juganaru@yahoo.com

Signs used on the route



Appeal

Any competitor who considers that he has been prejudiced by any kind of action / decision during the competition may submit an appeal to the competition jury after crossing the finish line.

The appeal against the results must be submitted in writing and must be signed and filed within 15 minutes from the display of the recorded results, together with a fee of 100 lei, according to the financial norms in force. The fee will be refunded if the appeal is upheld. If an appeal is made by one of the top five runners-up, the award ceremony will be postponed until a decision is made. The decisions of the competition jury on the interpretation of technical regulations for which disciplinary measures are required will be final.



A.C.S. Mtb Academy
CUI 34299340
Sediul operational: Sos Iancului, Nr 27 A, Bl. 105 D, Sc A, Et 7, Ap 38, Sector 2,
Bucuresti
Tel: +40 755122111
E-mail: razvan.juganaru@mtbacademy.com
razvan.juganaru@yahoo.com

Event schedule:

Thursday, September 21st

- 16.00: Opening of the route for XCE and XCO free practice
- 19.00: Closing the route for free practice XCE and XCO

Friday, September 22nd

- 08.00: Opening of the route for free practice XCE and XCO
- 08.00: Opening of the licenses validation procedure for the XCE races
- 10.00: Closing of the licenses validation procedure for the XCE races
- 10.00: Closing the route for XCE and XCO free practice
- 10.00: XCE Children Technical Meeting
- 10.15: Start line-up of XCE qualifying competitors (all categories of children)
- 10.20: Start of the first athlete in XCE Qualifiers (start at 1 min, (all categories of children)
- 11.20: Start line-up for Semifinals (all categories of children) XCE
- 11.30: Start in the Semifinals (all categories of children) XCE
- 12.10: Start line-up for the Small Finals (all categories of children) XCE
- 12.20: Start in the Semifinals (all categories of children) XCE
- 12.50: Line up for the Finals (all categories of children) XCE
- 13.00: Start in Finals (all categories of children) XCE
- 13.30: Technical meeting for all categories Elite / Junior / Master / Amateur
- 13.45: Start line-up of XCE qualifiers (all categories)
- 13.50: Start of the first athlete in XCE Qualifiers (start at 1 min, all categories)
- 14.50: Start line-up for XCE Semifinals (all categories)
- 15.00: Start in the Semifinals (all categories) XCE
- 15.40: Start line-up for XCE Small Finals (all categories)
- 15.10: Start in the Semifinals (all categories) XCE
- 15.40: Start line-up for XCE Finals (all categories)
- 15.50: Start in Finals (all categories) XCE
- 16.30: XCE Championship Award Ceremony
- 16.30: XCO free practice trail opening
- 17.00: Opening of the licenses validation procedure for the XCO races
- 19.00: Closing of the licenses validation procedure for the XCO races
- 19.30: XCO free practice trail closing
- 19.30: Technical brief

Saturday, September 23rd

- 07.00: XCO free practice opening
- 08.00: Closing of the XCO free practice route
- 08.20: Start line-up for participants of children categories D2 (5-6 years) and D1 (7-8 years)
- 08.30: Start for participants of children categories D2 (5-6 years) and D1 (7-8 years)
- 08.50: Start line-up for participants of C children's races (9-10 years)



A.C.S. Mtb Academy
 CUI 34299340
 Sediul operational: Sos Iancului, Nr 27 A, Bl. 105 D, Sc A, Et 7, Ap 38, Sector 2,
 Bucuresti
 Tel: +40 755122111
 E-mail: razvan.juganaru@mtbacademy.com
razvan.juganaru@yahoo.com

09.00: Start for participants of C children races (9-10 years)
 09.30: Start line-up for B children races (11-12 years old)
 09.45: Start for B children races (11-12 years)
 10.15: Start line-up for participants of children A races (13-14 years)
 10.30: Start for participants of children A races (13-14 years)
 11.30: Start line-up for the participants of the races Cadets M/F, Amateur M/F, Master 1 M, Master 2 M, Master 3 M, Master F
 11.45: Start for participants of the races Cadets M/F, Amateur M/F, Master 1 M, Master 2 M, Master 3 M, Master F
 13.30: Start line-up for Elite M/F, U23 M/F and Junior M/F races
 13.45: Start for Elite M/F, U23 M/F and Junior M/F races
 15.45: Award ceremony (at the start area at 67 Richard Street (45.267276, 25.019981))

Observations

At the official training, athletes are required to wear their numbers on the handlebars.

Awards ceremony

The Elite, U23, Junior, Cadets, Children, Amateur and Master awards ceremonies will be held at the start area at 67 Richard Street (45.267276, 25.019981).

The prizes will consist of money and products offered by sponsors, along with the awarding of Cup Winners jerseys.

UCI Points:

	ELITE M/F	JUNIORS M/F
1 st place	30	20
2 nd place	20	18
3 rd place	15	16
4 th place	12	14
5 th place	10	12
6 th place	8	10
7 th place	6	8
8 th place	4	6
9 th place	2	4
10 th place	1	2

In accordance with the UCI regulations for C2 races, the Elite and U23 categories are merged.



A.C.S. Mtb Academy
 CUI 34299340
 Sediul operational: Sos Iancului, Nr 27 A, Bl. 105 D, Sc A, Et 7, Ap 38, Sector 2, Bucuresti
 Tel: +40 755122111
 E-mail: razvan.juganaru@mtbacademy.com
razvan.juganaru@yahoo.com

UCI Races Prizes:

	ELITE M/F	JUNIORS M/F
1 st place	180 Euro	70 Euro
2 nd place	140 Euro	60 Euro
3 rd place	110 Euro	45 Euro
4 th place	90 Euro	30 Euro
5 th place	70 Euro	20 Euro
6 th place	65 Euro	
7 th place	60 Euro	
8 th place	50 Euro	
9 th place	45 Euro	
10 th place	35 Euro	

In accordance with the UCI regulations for C2 races, the Elite and U23 categories are merged.

Other information

- Access and parking area for participants' cars is organized at the following coordinates: [45.267119, 25.020647](#).
- The on-site ambulance will be located near the Start-Finish area, at the following coordinates: [45.267132, 25.019386](#).
- On the route there will be a system of four first-aid stations, an intervention ATV and an ambulance.
- On the route there will be a systems of 5 posts with referees and 5 posts with volunteers.
- Nearest hospital: Câmpulung Municipal Hospital (Str. Dr. Costea, Nr. 8, Câmpulung Muscel, Arges County) / Phone: 0248510100 / 0248511102 / 0248511114.

Emergencies

Emergency numbers. For any type of emergency during the competition, the phone numbers are: 0755 122 111 or 0746 577 150. These numbers can also be found on the contest number.

Withdrawal. In case of leaving the race, the participant undertakes to send an SMS to the emergency numbers mentioned on the competition number, announcing the number, name and reason for leaving the race.



A.C.S. Mtb Academy
CUI 34299340
Sediul operational: Sos Iancului, Nr 27 A, Bl. 105 D, Sc A, Et 7, Ap 38, Sector 2,
Bucuresti
Tel: +40 755122111
E-mail: razvan.juganaru@mtbacademy.com
razvan.juganaru@yahoo.com

Accidents. In case of injury, the intervention is done according to the emergency intervention plan, agreed and signed by the medical crew present at the event. Participants will give priority to intervention vehicles and official ATVs. They provide medical and logistical support.

Accommodation possibilities

<http://ciobanasu.ro/>

<https://popasulciclistului.ro>

<https://www.facebook.com/lyvinfront/>

<http://www.pensiunea-valea-ursului.ro/>

https://www.hotelscombined.com/Hotel/Pensiunea_Brancoveneasca.htm

http://www.unbaiatsiofata.ro/Site_pensiune/servicii.html

http://www.muscelul.ro/hotel_muscelul/hotel_muscelul.html

House in A – 6pers – 0745 149 129

<https://www.olx.ro/oferta/cazare-pensiune-IDceOZB.html>

Organizer contact information

Jugănaru Răzvan

Tel +40755122111

razvan.juganaru@yahoo.com