



A.C.S. Mtb Academy
CUI 34299340
Sediul operational: Sos Iancului, Nr 27 A, Bl. 105 D, Sc A, Et 7, Ap 38, Sector 2,
Bucuresti
Tel: +40 755122111
E-mail: razvan.juganaru@mtbacademy.com
razvan.juganaru@yahoo.com

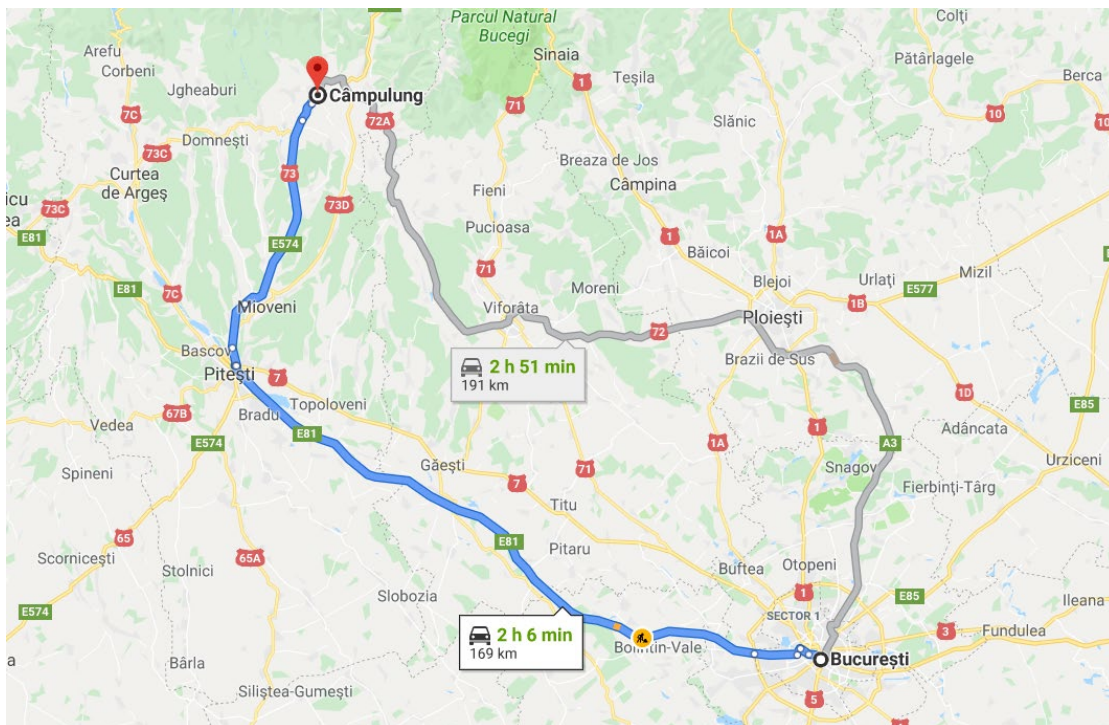
MTB ACADEMY CUP (XCE) Technical Guide

Race details

Name: MTB ACADEMY CUP (XCE Elite National Championships, U23, Juniors, Cadets, Masters, Amateurs, Children)

Organizer: A.C.S. MTB Academy in partnership with the Romanian Cycling Federation

Location: Campulung Muscel, Arges County, 170 km from Bucharest



Format: Cross-Country Eliminator (XCE) on a route of 0.8 km with a level difference of 20 m (according to Garmin Connect)

Date: September 22, 2022

Start time: 12:00



A.C.S. Mtb Academy
CUI 34299340
Sediul operational: Sos Iancului, Nr 27 A, Bl. 105 D, Sc A, Et 7, Ap 38, Sector 2,
Bucuresti
Tel: +40 755122111
E-mail: razvan.juganaru@mtbacademy.com
razvan.juganaru@yahoo.com

Categories in the XCE National Championship:

- XCE | Elite & U23 | Male
- XCE | Elite & U23 | Female
- XCE | Juniors & Cadets | Male
- XCE | Juniors & Cadets | Female
- XCE | Master & Amateur OPEN 19+ years (Licensee) | Male
- XCE | Master & Amateur OPEN 19+ years (Licensee) | Female
- XCE | Children A 13-14 | Male
- XCE | Children A 13-14 | Female
- XCE | Children B 11-12 | Male
- XCE | Children B 11-12 | Female
- XCE | Children C 9-10 | Male
- XCE | Children C 9-10 | Female
- XCE | Children D1 7-8 | Male
- XCE | Children D1 7-8 | Female
- XCE | Children D2 5-6 | Male
- XCE | Children D2 5-6 | Female

Official web page: <https://www.ridersclub.ro/en/cycling-race/mtb-academy-cup-xce-2023>

Registrations: <https://www.ridersclub.ro/en/cycling-race/mtb-academy-cup-xce-2023#entries>

Regulations

The competition complies with UCI and FRC regulations. The full regulation can be found at
http://www.uci.ch/mm/Document/News/Rulesandregulation/17/29/73/4MTB-E-1.01.2017_English.pdf
<https://www.uci.org/docs/default-source/rules-and-regulations/part-i-general-organisation/1-gen-20200612-e.pdf>
<https://www.uci.org/docs/default-source/rules-and-regulations/03022020-mtb-eng-left-column.pdf>

Event registration

To participate it is necessary to register through the official page, accessible through the link here:



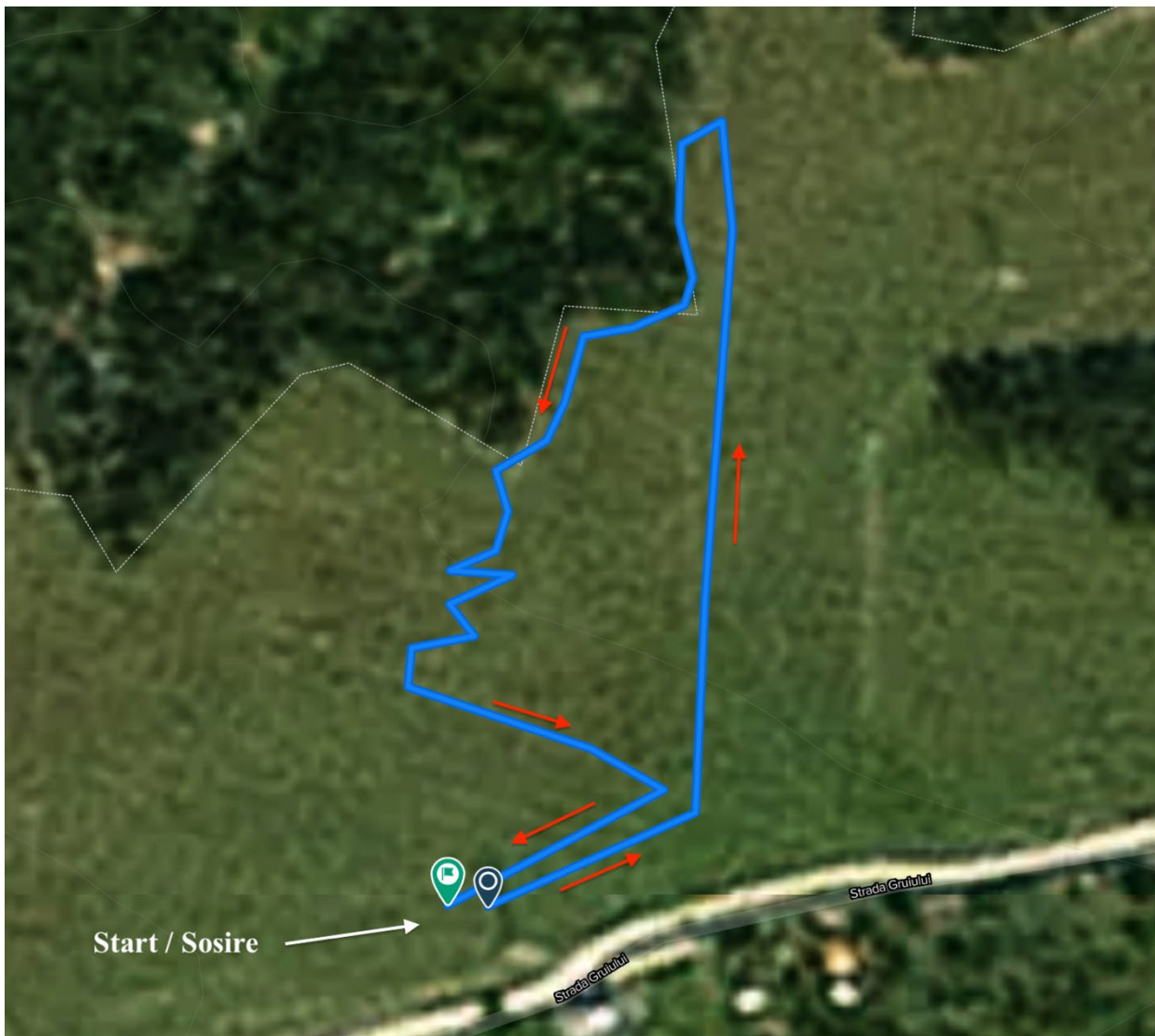
A.C.S. Mtb Academy
CUI 34299340
Sediul operational: Sos Ianului, Nr 27 A, Bl. 105 D, Sc A, Et 7, Ap 38, Sector 2,
Bucuresti
Tel: +40 755122111
E-mail: razvan.juganaru@mtbacademy.com
razvan.juganaru@yahoo.com

<https://www.ridersclub.ro/en/cycling-race/mtb-academy-cup-xce-2023#entries>

Elite category athletes must hold a valid UCI license.

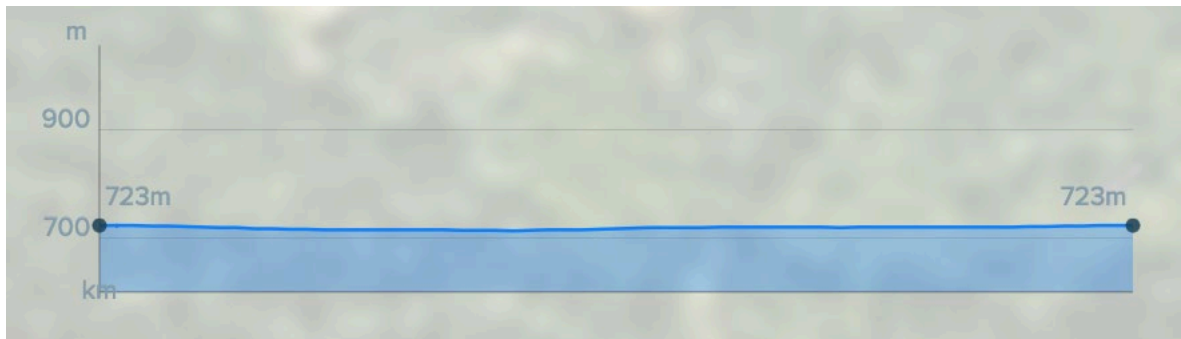
Amateur athletes must hold an amateur license issued by the Romanian Cycling Federation for 2023.

Course: <https://www.bikemap.net/en/r/11924437/#17.14/45.268292/25.019934>





A.C.S. Mtb Academy
CUI 34299340
Sediul operational: Sos. Iancului, Nr 27 A, Bl. 105 D, Sc A, Et 7, Ap 38, Sector 2,
Bucuresti
Tel: +40 755122111
E-mail: razvan.juganaru@mtbacademy.com
razvan.juganaru@yahoo.com



Timing

The event will be electronically timed with disposable chips.

Numbers pick-up

The verification of licenses, which is mandatory, and the competition numbers pick-up will be done on Friday, September 22nd, between 08:00 and 10:00, at the competition office located at the start area on Richard Street, no. 67 (45.267276, 25.019981). Any athlete who fails to raise the competition number within the specified intervals has the obligation to notify the organizer who will notify the referees commission. Otherwise, they will not be allowed to be lined-up for the start.

Equipment

The bike must be an MTB bike and be in good working order. Helmet is mandatory. The race number is mandatory, one on the handlebars of the bike and one on the competitor's back. For visibility it must be fixed in front, on the handlebars of the bike as well as on the back, at hip level.

Minimum number of participants

If there will not be at least 8 participants in a category, by decision of the technical delegate of the FRC together with the organizer and the President of the Referees Commission, it will be merged with the next higher category. The decision will be communicated during the technical meeting that will take place before the first start of qualifying.



A.C.S. Mtb Academy
CUI 34299340
Sediul operational: Sos. Iancului, Nr 27 A, Bl. 105 D, Sc A, Et 7, Ap 38, Sector 2,
Bucuresti
Tel: +40 755122111
E-mail: razvan.juganaru@mtbacademy.com
razvan.juganaru@yahoo.com

Start area

The Start area will be staged near **Richard Street no. 67**, Campulung. GPS coordinates are 45.267132, 25.019386.
The positioning of the Start area is signaled in the image below.





A.C.S. Mtb Academy
CUI 34299340
Sediul operational: Sos Iancului, Nr 27 A, Bl. 105 D, Sc A, Et 7, Ap 38, Sector 2,
Bucuresti
Tel: +40 755122111
E-mail: razvan.juganaru@mtbacademy.com
razvan.juganaru@yahoo.com

Contest categories

- XCE | Elite & U23 | Male
- XCE | Elite & U23 | Female
- XCE | Juniors & Cadets | Male
- XCE | Juniors & Cadets | Female
- XCE | Master & Amateur OPEN 19+ years (Licensee) | Male
- XCE | Master & Amateur OPEN 19+ years (Licensee) | Female
- XCE | Children A 13-14 | Male
- XCE | Children A 13-14 | Female
- XCE | Children B 11-12 | Male
- XCE | Children B 11-12 | Female
- XCE | Children C 9-10 | Male
- XCE | Children C 9-10 | Female
- XCE | Children D1 7-8 | Male
- XCE | Children D1 7-8 | Female
- XCE | Children D2 5-6 | Male
- XCE | Children D2 5-6 | Female

* if there are not at least 8 participants in one of the categories, the category merges with the next superior

Services / facilities available at the start area

- Medical assistance
- First aid points
- Technical assistance
- Feeding and hydration area
- Toilets
- Bike washing



A.C.S. Mtb Academy
CUI 34299340
Sediul operational: Sos Iancului, Nr 27 A, Bl. 105 D, Sc A, Et 7, Ap 38, Sector 2,
Bucuresti
Tel: +40 755122111
E-mail: razvan.juganaru@mtbacademy.com
razvan.juganaru@yahoo.com

Start procedure

There will be separate starts for each category:

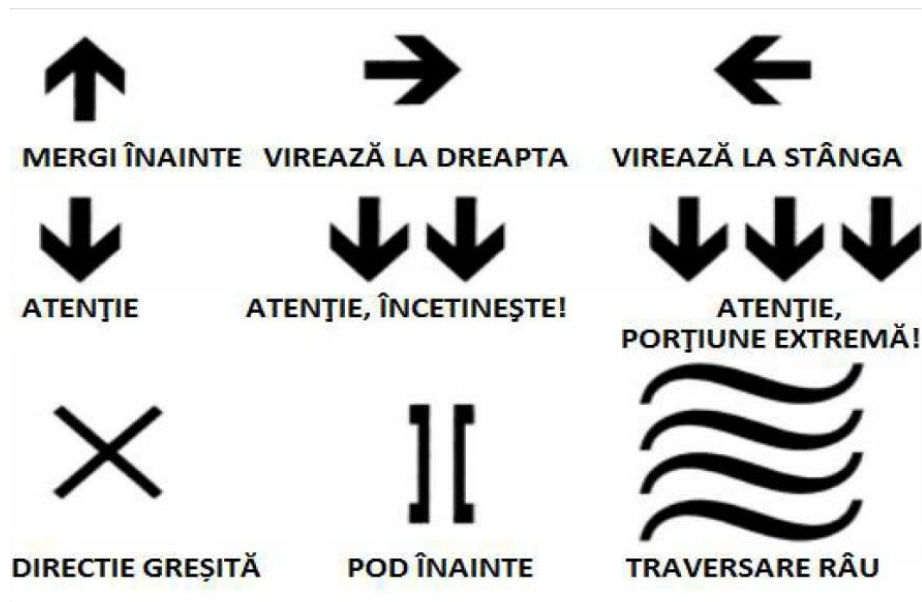
- 10:00: XCE Children Technical Meeting
- 10:15: Line-up for the start of XCE qualifying competitors (all categories of children)
- 10:20: Start of the first athlete in XCE Qualifiers (start at 1 min apart, (all categories of children)
- 11:20: Start line-up for the Semifinals (all categories of children) XCE
- 11:30: Start in the Semifinals (all categories of children) XCE
- 12:10: Start line-up for XCE Small Finals (all children's categories)
- 12:20: Start in the Semifinals (all categories of children) XCE
- 12:50: Start line-up for XCE Finals (all categories of kids)
- 13:00: Start in the Finals (all categories of children) XCE
- 13:30: Technical meeting for all categories Elite / Junior / Master / Amateur
- 13:45: Start line-up of XCE qualifiers (all categories)
- 13:50: Start of the first athlete in XCE Qualifiers (start at 1 min, all categories)
- 14:50: Start line-up for XCE Semifinals (all categories)
- 15:00: Start in Semifinals (all categories) XCE
- 15:40: Start line-up for XCE Small Finals (all categories)
- 15:10: Start in the Semifinals (all categories) XCE
- 15:40: Start line-up for XCE Finals (all categories)
- 15:50: Start in Finals (all categories) XCE
- 16:30: XCE Championship Award Ceremony

The starting grid will be established according to the order of registration in the event. The start will be given by the start referee according to the following procedure: announcements 3 minutes, 2 minutes, 1 minute and 30 seconds before the start, followed by the announcement that the start will be given anytime in the next 15 seconds.



A.C.S. Mtb Academy
CUI 34299340
Sediul operational: Sos. Iancului, Nr 27 A, Bl. 105 D, Sc A, Et 7, Ap 38, Sector 2,
Bucuresti
Tel: +40 755122111
E-mail: razvan.juganaru@mtbacademy.com
razvan.juganaru@yahoo.com

Signs used on the route



Appeals

Any competitor who considers that he has been prejudiced by any kind of action / decision during the competition may submit an appeal to the competition jury after he/she has crossed the finish line. The appeal against the results must be in writing and must be signed and filed within 15 minutes from displaying the recorded results, together with a fee of 100 lei, according to the financial norms in force. The fee will be refunded if the appeal is accepted. If an appeal is made by one of the top five runners-up, the award ceremony will be postponed until a decision is made. The decisions of the competition jury on the interpretation of technical regulations for which disciplinary measures are required and on any appeals received in accordance with the above will be final.



A.C.S. Mtb Academy
CUI 34299340
Sediul operational: Sos Iancului, Nr 27 A, Bl. 105 D, Sc A, Et 7, Ap 38, Sector 2,
Bucuresti
Tel: +40 755122111
E-mail: razvan.juganaru@mtbacademy.com
razvan.juganaru@yahoo.com

Event schedule

Thursday, September 21st

- 16:00: Opening of the route for XCE and XCO free practice
- 19:00: Closing the route for free practice XCE and XCO

Friday, September 22nd

- 08:00: Opening of the route for free practice XCE and XCO
- 08:00: Opening of the licenses validation procedure for the XCE races
- 10:00: Closing of the licenses validation procedure for the XCE races
- 10:00: Closing the route for XCE and XCO free practice
- 10:00: XCE Children Technical Meeting
- 10:15: Line-up for the start of XCE qualifying competitors (all categories of children)
- 10:20: Start of the first athlete in XCE Qualifiers (start at 1 min, (all categories of children)
- 11:20: Start line-up for Semifinals (all categories of children) XCE
- 11:30: Start in the Semifinals (all categories of children) XCE
- 12:10: Line up at the start for the Small Finals (all categories of children) XCE
- 12:20: Start in the Semifinals (all categories of children) XCE
- 12:50: Line up for the Finals (all categories of children) XCE
- 13:00: Start in Finals (all categories of children) XCE
- 13:30: Technical meeting for all categories Elite / Junior / Master / Amateur
- 13:45: Start line-up of XCE qualifiers (all categories)
- 13:50: Start of the first athlete in XCE Qualifiers (start at 1 min, all categories)
- 14:50: Start line-up for XCE Semifinals (all categories)
- 15:00: Start in the Semifinals (all categories) XCE
- 15:40: Start line-up for XCE Small Finals (all categories)
- 15:10: Start in the Semifinals (all categories) XCE
- 15:40: Start line-up for XCE Finals (all categories)
- 15:50: Start in Finals (all categories) XCE
- 16:30: XCE Championship Award Ceremony
- 16:30: XCO free practice trail opening
- 17:00: Opening of the licenses validation procedure for the XCO races
- 19:00: Closing of the licenses validation procedure for the XCO races
- 19:30: XCO free practice trail closing
- 19:30: Technical brief

Saturday, September 23rd

- 07:00: XCO free practice opening
- 08:00: Closing of the XCO free practice route
- 08:20: Line-up for start for participants of children categories D2 (5-6 years) and D1 (7-8 years)
- 08:30: Start for participants of children categories D2 (5-6 years) and D1 (7-8 years)
- 08:50: Line-up for start for participants of C children's races (9-10 years)



A.C.S. Mtb Academy
CUI 34299340
Sediul operational: Sos Iancului, Nr 27 A, Bl. 105 D, Sc A, Et 7, Ap 38, Sector 2,
Bucuresti
Tel: +40 755122111
E-mail: razvan.juganaru@mtbacademy.com
razvan.juganaru@yahoo.com

09.00: Start for participants of C children's races (9-10 years)
09.30: Line-up for start for participants of B children's races (11-12 years)
09.45: Start for participants of B children's races (11-12 years)
10.15: Line-up for start for participants of children A races (13-14 years)
10.30: Start for participants of children races A (13-14 years)
11.30: Line-up for start for the participants of the races Cadets M/F, Amateur M/F, Master 1 M, Master 2 M, Master 3 M, Master F
11.45: Start for participants in the races Cadets M/F, Amateur M/F, Master 1 M, Master 2 M, Master 3 M, Master F
13.30: Line-up at the start for Elite M/F, U23 M/F and Junior M/F races
13.45: Start for Elite M/F, U23 M/F and Junior M/F races
15.45: Award ceremony (at the start area at 67 Richard Street (45.267276, 25.019981))

Observations

At the official training, athletes must wear the numbers on the handlebars.

Prizes

National Champions T-shirt Award

Awards ceremony

15.45: Awards Ceremony for Elite, U23, Junior, Cadets, Children, Amateurs and Masters at the start area at 67 Richard Street (45.267276, 25.019981)

Route

Elite, U23, Juniors, Cadets, Amateurs, Master: 0.8 km / lap with 20 m level difference

Children A, B, C, D1, D2: 0,4 km / lap with 10 m level difference

Other information

- Access and parking area for participants' cars is organized at the following coordinates: [45.267119, 25.020647](#).
- The ambulance on site will be located near the Start-Finish area, at the following coordinates: [45.267132, 25.019386](#).
- On the route we will have a system of four first-aid stations, an intervention ATV and an Ambulance.
- On the route we will have a system of 5 posts with referees and 5 positions with volunteers.
- Nearest hospital: Campulung Municipal Hospital (Str. Dr. Costea, Nr. 8, Campulung Muscel, Arges County) / Phone: 0248510100 / 0248511102 / 0248511114.

Emergencies

Emergency numbers. For any type of emergency during the competition, the phone numbers are: 0755 122 111 or 0746 577 150. These numbers can also be found on the contest number.



A.C.S. Mtb Academy
CUI 34299340
Sediul operational: Sos Iancului, Nr 27 A, Bl. 105 D, Sc A, Et 7, Ap 38, Sector 2,
Bucuresti
Tel: +40 755122111
E-mail: razvan.juganaru@mtbacademy.com
razvan.juganaru@yahoo.com

Withdrawal. In case of leaving the race, the participant undertakes to send an SMS to the emergency numbers mentioned on the contest number, announcing the number, name and reason for leaving the race.

Accidents. In case of injury, the intervention is done according to the emergency intervention plan, agreed and signed by the medical crew present at the event. Participants will give priority to intervention vehicles and official ATVs. They provide medical and logistical support.

Accommodation possibilities

<http://ciobanasu.ro/>

<https://popasulciclistului.ro>

<https://www.facebook.com/lyvinfront/>

<http://www.pensiunea-valea-ursului.ro/>

https://www.hotelscombined.com/Hotel/Pensiunea_Brancoveneasca.htm

http://www.unbaiatsiofata.ro/Site_pensiune/servicii.html

http://www.muscelul.ro/hotel_muscelul/hotel_muscelul.html

House in A – 6pers – 0745 149 129

<https://www.olx.ro/oferta/cazare-pensiune-IDceOZB.html>

Contact Organizer

Juganaru Razvan

Tel +40755122111

razvan.juganaru@yahoo.com